



WOMEN JOGGING PANTS
STELLA BOPPER



STBW314

The women's jogger pants

Brushed Jogger Pants
 85% Organic ring-spun combed cotton, 15% Recycled polyester
 300 GSM

- 1x1 rib waistband
- Round drawcords in matching body colour with metal tipping
- Metal eyelets
- Pocket lining in single jersey
- Patch pocket at back
- 1x1 rib at bottom leg hem
- Waistband, pocket opening, rise seams, and leg cuff with twin needle topstitch

COLORS

FRENCH NAVY BLACK

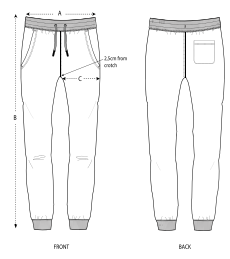
ESSENTIAL
HEATHERS

HEATHER GREY

MEDIUM FIT

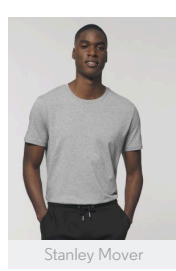
XS	S	M	L	XL
----	---	---	---	----

Size guide



SIZES		XS	S	M	L	XL
A	Waist	35.5	37.5	40	42.5	45
B	Leg Length	96	98	100	101	102
C	Tight	27.8	28.5	29.5	31	32.5

Combo options



Printing Specifications

Fits all kinds of print techniques. Please download our printing guide for details.

STANLEY/STELLA

Wash similar colours together, do not iron on print, wash and iron inside out.

