



WOMEN SWEAT DRESSES  
**STELLA KICKS**



STDW139

**The women's crew neck dress**

Terry Sweatshirt  
85% Organic ring-spun combed cotton, 15% Polyester  
300 GSM

- Set-in sleeve
- 1x1 rib at neck collar, sleeve hem and bottom hem
- Inside back neck tape in single jersey
- Self fabric halfmoon at back neck
- Flatlock topstitch on all seams
- CERTIFICATION/STOCK: Based on stock levels, some quantities may be GOTS

COLORS



ESSENTIAL HEATHERS



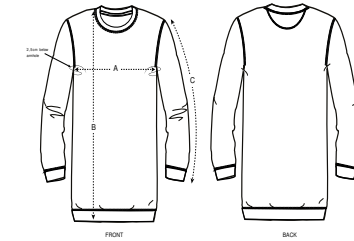
SPECIAL HEATHERS



MEDIUM FIT

XS	S	M	L	XL
----	---	---	---	----

Size guide



SIZES		XS	S	M	L	XL
A	Half Chest	46	48.5	51.5	54.5	57.5
B	Body Length	86	88	90	92	93
C	Sleeve Length	61	61	62	62.5	63

Printing Specifications

Fits all kinds of print techniques. Please download our printing guide for details.

**STANLEY/STELLA**

Wash similar colours together, do not iron on print, wash and iron inside out.

