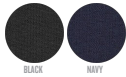




COLORS



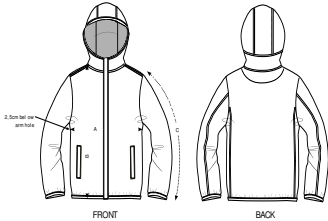
WOMEN WINDBREAKERS
STJW080 - STELLA WINDS



The women's light hoodie jacket

Medium Fit

- Set-in sleeve
- Double layered hood in self fabric
- Hidden front placket with reversed nylon zip
- Side welt pockets with reversed nylon zip
- Elastic tape binding at hood opening, sleeve hem and bottom hem
- Inside hanger loop in self fabric
- Self fabric half moon at back neck
- Single topstitch on all seams



SIZES		XS	S	M	L	XL
A	Half Chest	46	49	52	55	58
B	Body Length	60	62	64	66	68
C	Sleeve Length	62	63	64	65	66

Combo options



Stanley Breaks

Printing Specifications

For suitable print techniques, please download our printing guide

Certifications & memberships



Wash Instructions

Wash similar colours together, do not iron on print, wash inside out. Close all zips, buttons and velcros before washing.



Shell : Ripstop , 100% Recycled polyester , Durable water repellent , 70 GSM