

WOMEN PADDED JACKET

## STJW899 - STELLA CLIMBER WOOL-LIKE



ESSENTIAL  
HEATHERS



### The wool-like women's body warmer

#### Fitted

- Sleeveless
- High collar
- Reverse nylon zip at center front
- Zipped welt pockets with extra grosgrain puller
- Elastic tape binding at armhole
- Fully quilted
- Side panels for better shape
- Inside seams with binding finish
- Bottom hem with adjustable plastic stopper and elastic cord

#### Combo options



Stanley Climber Wool-Like

Shell : Plain Weave Brushed , 100% Polyester - Recycled , Fluorine-free DWR , 140 GSM

Padding : 100% Polyester - Recycled , 175 GSM

Lining : Plain Weave , 100% Polyester - Recycled , Fluorine-free DWR , 75 GSM

#### Printing Specifications

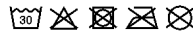
For suitable print techniques, please download our printing guide

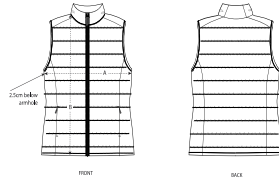
#### Certifications & memberships



#### Wash Instructions

Wash similar colours together, no ironing, wash inside out. Close all zips before washing.





| SIZES |             | XS | S  | M  | L  | XL | XXL |
|-------|-------------|----|----|----|----|----|-----|
| A     | Half Chest  | 47 | 50 | 53 | 56 | 59 | 62  |
| B     | Body Length | 58 | 60 | 62 | 64 | 66 | 68  |

### PACKING

| SIZES   | XS | S  | M  | L  | XL | XXL |
|---------|----|----|----|----|----|-----|
| PCS/BAG | 5  | 5  | 5  | 5  | 5  | 5   |
| PCS/BOX | 10 | 10 | 10 | 10 | 10 | 10  |