



MEN POLOS  
**STANLEY DEDICATOR**



STPM563

**The iconic men's polo**

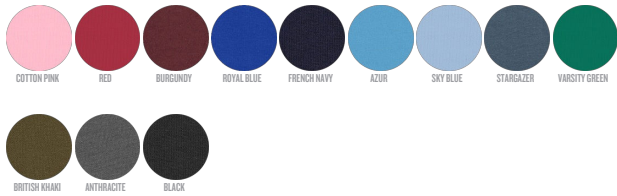
Piqué  
100% Organic ring-spun combed cotton  
230 GSM

- Set-in sleeve
- Flat knit rib on collar and sleeve hem
- Inside herringbone back neck tape
- Front placket with 2 buttons in matching body colour
- Slit at side seams with herringbone facing
- Single needle topstitch at shoulder seams
- Bottom hem with wide double topstitch
- Back length is longer than front length

WHITES



COLORS



ESSENTIAL  
HEATHERS

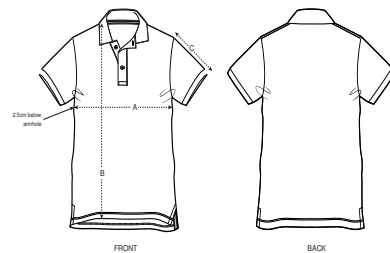


*\*Size available on limited number of colours. Please check our webshop for latest information*

MEDIUM FIT

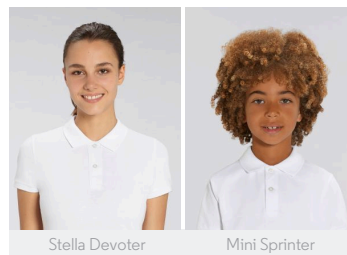
S	M	L	XL	XXL	XXXL*	XXXXL*
---	---	---	----	-----	-------	--------

Size guide



SIZES	S	M	L	XL	XXL	XXXL	XXXXL
A Half Chest	49	52	55	58	61	64	72
B Body Length	70	72	74	76	78	81	82
C Sleeve Length	22.5	22.5	23.5	23.5	24.5	25.5	26.5

Combo options



Printing Specifications

Fits all kinds of print techniques. Please download our printing guide for details.

**STANLEY/STELLA**

Wash similar colours together, do not iron on print, wash and iron inside out.



**FAIR WEAR**