



WOMEN POLOS  
**STPW034 - STELLA DEVOTER**



**The women's polo**

Piqué  
 95% Organic ring-spun combed cotton, 5% Elastane  
 Medium Fit  
 200 GSM

- Set-in sleeve
- Flat knit rib on collar and sleeve hem
- Inside herringbone back neck tape
- Front placket with 2 buttons in matching body colour
- Slit at side seams with herringbone facing
- Single needle topstitch at shoulder seams
- Bottom hem with narrow double topstitch
- Back length is longer than front length

**WHITES**

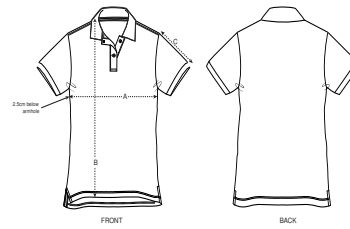


**COLORS**



**ESSENTIAL**

**HEATHERS**



SIZES		XS	S	M	L	XL	XXL
A	Half Chest	41	43.5	46.5	49.5	52.5	55.5
B	Body Length	62	64	66	68	69	69
C	Sleeve Length	15	15	16	16	17	17

*Some sizes are only available on a limited number of colours. Please check our webshop for latest information*

**Combo options**



**Printing Specifications**

For suitable print techniques, please download our printing guide

**Certifications & memberships**



**Wash Instructions**

Wash similar colours together, do not iron on print, wash and iron inside out.

