



UNISEX / ZIP-THRU  
SWEATSHIRTS  
**WARMER SHERPA**



STSU715

**The unisex sherpa lined zip-thru hoodie sweatshirt**

Terry Sweatshirt

85% Organic ring-spun Combed Cotton, 15% Recycled Polyester  
300 GSM

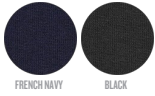
- Set-in sleeve
- Lined hood in recycled sherpa
- Round drawcords in matching body colour with metal tipping
- Metal eyelets
- Inside herringbone back neck tape in greige colour
- Self fabric half moon at back neck
- Covered metal zip at center front
- 1x1 rib at sleeve hem and bottom hem
- Flatlock topstitch on all seams
- Kangaroo pocket at front
- Fully lined with recycled sherpa
- Inside chest pocket
- Inside invisible zip at bottom hem for easy decoration

MEDIUM FIT

XS S M L XL XXL

Size guide

COLORS

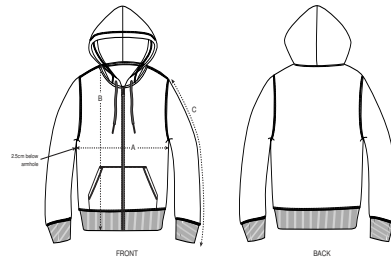


FRENCH NAVY BLACK

ESSENTIAL HEATHERS



HEATHER GREY



SIZES		XS	S	M	L	XL	XXL
A	Half Chest	50	52.5	55	58	61	64
B	Body Length	65	68	72	74	76	78
C	Sleeve Length	61.5	64	65.5	67	68.5	70

Printing Specifications

Fits all kind of printing techniques. Please visit our website for more information.

Wash similar colours together, do not iron on print, wash and iron inside out. Close zip before washing

