



WOMEN / CREW NECK SWEATSHIRTS
STELLA ESCAPES



STSW050

The women's wide open neck sweatshirt

Terry Sweatshirt
 85% Organic ring-spun Combed Cotton, 15% Polyester
 300 GSM

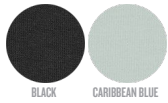
- Raglan sleeve
- Wide open neck
- Self fabric at neck collar, sleeve hem and bottom hem with flatlock topstitch
- Flatlock topstitch on all seams

RELAXED FIT

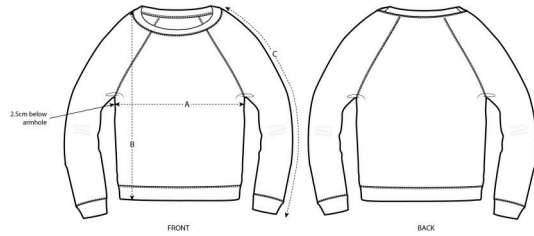
XS S M L XL

Size guide

COLORS



ESSENTIAL HEATHERS



SIZES		XS	S	M	L	XL
A	Half Chest	48	50.5	53.5	56.5	59.5
B	Body Length	61	63	65	67	68
C	Sleeve Length	65.8	67	68.5	69.8	71

Printing Specifications

Fits all kind of printing techniques. For more information, please visit our website.

