



WOMEN CREW NECK SWEATSHIRTS
STELLA TRACKER



STSW126

The women's half zip sweatshirt

Brushed Sweatshirt
85% Organic ring-spun combed cotton, 15% Recycled polyester
300 GSM

- Raglan sleeve
- Neck collar in self fabric
- Inside herringbone back neck tape
- Self fabric half moon at back neck
- Half zip at center front with inside facing
- Bottom hem and neckline with single needle topstitch
- Sleeve hem with wide double topstitch
- Round drawcords at bottom hem in matching body colour with metal tipping
- Metal eyelets

WHITES



VINTAGE WHITE

COLORS



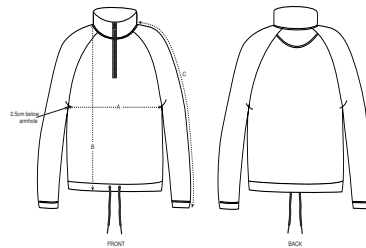
MOSS GREEN



BLACK

RELAXED FIT

Size guide



SIZES		XS	S	M	L	XL
A	Half Chest	48.5	51	54	57	60
B	Body Length	57	59	61	63	64
C	Sleeve Length	70	72	73.5	74.8	76

Combo options



Stanley Trucker

Printing Specifications

Fits all kinds of print techniques. Please download our printing guide for details.

STANLEY/STELLA

Wash similar colours together, do not iron on print, wash and iron inside out. Close zip before washing.

