



COLORS



WOMEN CREW NECK SWEATSHIRTS
STELLA TRIPSTER DENIM



STSW147

The women's denim crew neck sweatshirt

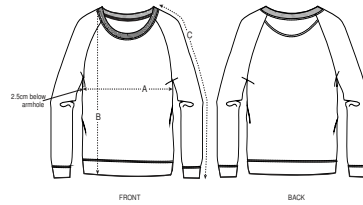
Terry Sweatshirt
85% Organic ring-spun combed cotton, 15% Recycled polyester
300 GSM

- Raglan sleeve
- 1x1 rib at neck collar, sleeve hem and bottom hem
- Inside back neck tape in single jersey
- Self fabric half moon at back neck
- Single needle topstitch at neck collar
- Faded look on all seams due to garment washing
- Indigo yarn dyed product, each garment may vary in appearance, colour may bleed, follow our care label
- Read carefully print recommendations
- CERTIFICATION/STOCK: Based on stock levels, some quantities may be GOTS

MEDIUM FIT

XS	S	M	L	XL
----	---	---	---	----

Size guide



SIZES		XS	S	M	L	XL
A	Half Chest	47.5	50	53	56	59
B	Body Length	61	63	65	67	68
C	Sleeve Length	69	71	72.5	73.8	75

Combo options



Stanley Stroller Denim

Printing Specifications

Fits all kinds of print techniques. Please download our printing guide for details.

Wash and dry separately, colour bleeds,
do not iron inside out, do not iron on
print. This garment is an indigo dyed item.
Each garment may vary in appearance.
Denim washed effect will become
stronger over time. Colour may transfer
by rubbing onto light coloured materials.
Use mild detergent which contains no
bleach.



STANLEY/STELLA