



WOMEN HOODIE SWEATSHIRTS
STELLA TRIGGER



STSW148

The iconic women's hoodie sweatshirt

Terry Sweatshirt

85% Organic ring-spun combed cotton, 15% Recycled polyester
350 GSM

- Raglan sleeve
- Double layered hood in self fabric
- Round drawcords in matching body colour with metal tipping
- Stitched buttonhole eyelets
- Inside herringbone back neck tape
- Self fabric half moon at back neck
- Single needle topstitch at neckline
- 1x1 rib at sleeve hem and bottom hem with twin needle topstitch
- Kangaroo pocket with wide double topstitch
- CERTIFICATION/STOCK: Based on stock levels, some quantities may be GOTS

COLORS



ESSENTIAL HEATHERS



SPECIAL HEATHERS

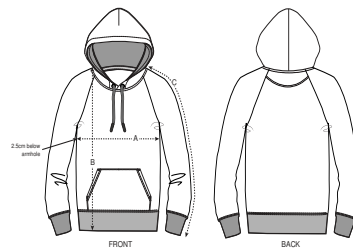


**Size available on limited number of colours. Please check our webshop for latest information*

MEDIUM FIT

XS	S	M	L	XL	XXL*
----	---	---	---	----	------

Size guide



SIZES		XS	S	M	L	XL	XXL
A	Half Chest	50.5	53	56	59	62	65
B	Body Length	59	61	63	65	66	67
C	Sleeve Length	69.8	71	72.5	73.8	75	76.2

Combo options



Printing Specifications

Fits all kinds of print techniques. Please download our printing guide for details.

Wash similar colours together, do not iron on print, wash and iron inside out.



STANLEY/STELLA

FAIR WEAR