



WOMEN ZIP-THRU SWEATSHIRTS  
**STELLA EDITOR**



STSW149

**The iconic women's zip-thru hoodie sweatshirt**

Brushed Sweatshirt  
85% Organic ring-spun combed cotton, 15% Recycled polyester  
350 GSM

- Set-in sleeve
- Double layered hood in self fabric
- Round drawcords in matching body colour with metal tipping
- Herringbone tape at inside back neck and at inside of zipper
- Metal zipper and eyelets
- Self fabric half moon at back neck
- Single needle topstitch at neckline
- 1x1 rib at sleeve hem and bottom hem
- Armhole, sleeve hem and bottom hem with twin needle topstitch.
- Kangaroo pocket with wide double topstitch

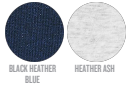
**COLORS**



**ESSENTIAL HEATHERS**



**SPECIAL HEATHERS**



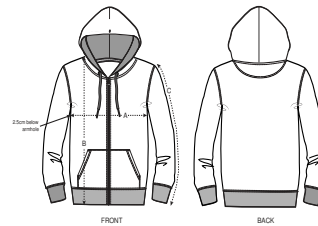
*\*Size available on limited number of colours*

*Please check our webshop for latest information*

**FITTED**

XS	S	M	L	XL	XXL*
----	---	---	---	----	------

**Size guide**



SIZES		XS	S	M	L	XL	XXL
A	Half Chest	44,5	47	50	53	56	59
B	Body Length	61	63	65	67	68	69
C	Sleeve Length	63.5	63.5	64.5	65	65.5	65.5

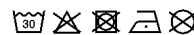
**Combo options**



**Printing Specifications**

Fits all kinds of print techniques. Please download our printing guide for details.

Wash similar colours together, do not iron on print, wash and iron inside out.



**STANLEY/STELLA**