



MEN / T-SHIRTS
STANLEY SHUFFLER DENIM



STTM561

The men's denim long sleeve T-shirt

Single Jersey
100% Organic ring-spun Combed Cotton
155 GSM

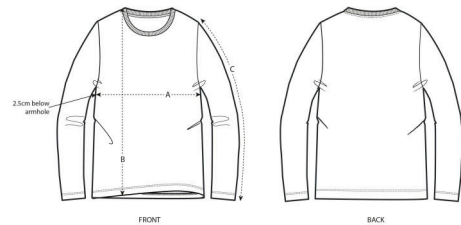
- Set-in sleeve
- 1x1 rib at neck collar
- Inside back neck tape in self fabric
- Sleeve hem and bottom hem with wide double topstitch
- Slight shading on seams to give washed look

MEDIUM FIT

S M L XL XXL

Size guide

COLORS



SIZES	S	M	L	XL	XXL
A Half Chest	49	52	55	58	61
B Body Length	70	72	74	76	78
C Sleeve Length	64	65	66	67	68

Printing Specifications

Fits all kind of printing techniques. For more information, please visit our website.

Wash similar colours together, do not iron on print, wash and iron inside out.

