



NEW STYLE

COLORS



UNISEXE CREW NECK SWEATSHIRTS
FIRER TIE AND DYE



STSU852

The unisex tie and dye crew neck sweatshirt

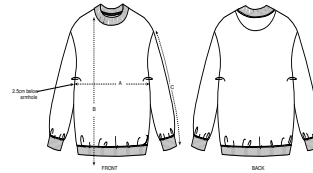
Molleton non brossé
 100% coton biologique filé et peigné
 300 GSM

- Set-in sleeve
- Dropped shoulder
- 1x1 rib at neck collar, sleeve hem and bottom hem
- Inside back neck tape in single jersey
- Self fabric half moon at back neck
- Sleeve hem and bottom hem with single topstitch
- Garment dyed product, each garment may vary in appearance, colour may bleed, follow our care label
- Read carefully print recommendations

COUPE OVERSIZED

| | | | | | |
|----|---|---|---|----|-----|
| XS | S | M | L | XL | XXL |
|----|---|---|---|----|-----|

Size guide

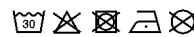


| SIZES | | XXS | XS | S | M | L | XL | XXL |
|-------|---------------|------|------|------|------|------|------|------|
| A | Half Chest | 56.5 | 59 | 61.5 | 64 | 67 | 70 | 73 |
| B | Body Length | 72.5 | 74.5 | 77.5 | 81.5 | 83.5 | 85.5 | 87.5 |
| C | Sleeve Length | 54.5 | 55.5 | 58.5 | 60 | 61 | 62 | 64 |

Printing Specifications

Fits all kinds of print techniques. Please download our printing guide for details.

Wash and dry separately, do not iron on print, wash and iron inside out. This is a hand dyed item. Each garment varies in appearance and design. Each garment has a unique look. Colour effect may fade over time. Colour may transfer by rubbing onto light coloured materials. Use mild detergent which contains no bleach.



STANLEY/STELLA