



**DONNA / CREW NECK SWEATSHIRTS**  
**STELLA REALIZES**



STSW135

**Loose crop sweatshirt with large collar**

Felpa garzata  
100% cotone biologico filato e pettinato  
350 GSM

- Set-in sleeve
- Dropped shoulder
- 1x1 rib at neck collar and sleeve hem
- Bottom hem with two needle topstitch
- Inside back neck tape in single jersey
- Self fabric half moon at back neck

VESTIBILITÀ MORBIDA

XS S M L XL

Guida alle taglie

COLORS



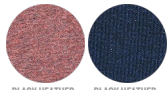
BLACK

ESSENTIAL HEATHERS

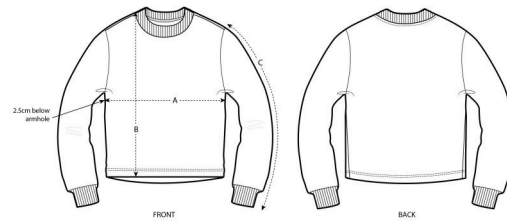


MID HEATHER GREY CREAM HEATHER GREY

SPECIAL HEATHERS



BLACK HEATHER CRANBERRY BLACK HEATHER BLUE



| SIZES |               | XS   | S  | M  | L    | XL |
|-------|---------------|------|----|----|------|----|
| A     | Half Chest    | 52.5 | 55 | 58 | 61   | 64 |
| B     | Body Length   | 51   | 53 | 55 | 57   | 58 |
| C     | Sleeve Length | 53   | 53 | 54 | 54.5 | 55 |

Specifiche di stampa

Compatibile con tutti i tipi di personalizzazione. Consultate la nostro sito web per maggiori informazioni.

